



The Herald

Autumn
2004

Hark the happenings of Historic Langhorne Association

160 West Maple Ave., Langhorne, PA 19047 215-757-1888 <http://hla.buxcom.net>

TIRED OF SITTING AT HOME WATCHING REALITY TV?

Get out of the house! Volunteer at HLA! Many visitors would like to know more about our artifacts exhibits, archival holdings and research library. We need people for:

- greeting visitors
- clerical work,
- filing,
- computer data entry
- library research,
- photocopying of scrapbooks,
- inventorying archives
- yard clean-up
- hosting meetings
- crafts and decorating for Holiday House Tour

You will find it very rewarding performing these activities that help HLA better serve our community. You will get to meet some very interesting people and learn more about our area's history.

We will hold an orientation meeting, Wednesday evening, September 8th at 7:30 pm. Come out and join the group. Refreshments will be served!

THE BUCKS COUNTY GAZETTE, JUNE 14, 1900

BIG BUTTER RECORD!

George M. Reed owns one of the best farms on the Neshaminy hills near Langhorne. The rich meadows along the Neshaminy are especially favorable for dairy purposes. His dairy is made of well selected stock and annually produces several tons of glit-edge butter, every pound of which finds ready sale in Langhorne, Hulmeville and Bristol. During the month ending May 31, Mrs. Reed, assisted by her daughter, made butter each week as follows: May 8, 180 lbs.; May 10, 166 lbs.; May 17, 140 lbs.; May 24, 140 lbs.; May 31, 148 lbs. Total for the month, 721 pounds of butter.

FYI: The Reed Farm was once at W. Maple Ave. going to Feasterville. The old farmhouse is visible from the road. New home construction is underway around the homestead today.

HLA is Open

Wednesdays 10am-12pm

7-9pm

Saturdays 10am-12pm

or by appointment

Admission is free

GHOSTBUSTERS!

HLA presents its Ghost Tour '04

Get in the spirit for our 2nd Annual Ghost Walk through the streets of Langhorne Borough! This year's tour dates are: **Saturday, October 2; Sunday, October 3; Wednesday, October 20; Saturday, October 23; Wednesday, October 27 & Saturday, October 30**

Ticket prices are \$5.00 for adults and \$2.50 for children 12 & under. There is a \$15 family rate, as well.

Tour groups will be no larger than 20 persons.

Tour times on each day scheduled will be 6:30pm, 7:00pm, 8:00pm and 8:30pm. Saturday, Oct. 30 we will have two special midnight tours. *Midnight tour tickets are \$20 each.

Tickets and reservations will be required in advance. Tickets can be purchased at HLA during open hours or call us at 215-757-1888, and at Judy's Corner Store, 127 S. Bellevue Ave., Langhorne, 215-757-6158. You can also order tickets by mail. Just send along a check or money order with your date preference to Ghost Tour, Historic Langhorne Association, 160 W. Maple Ave., Langhorne, PA 19047. Be sure to include your name, address and a telephone number/email address in event we need to contact you. Tour time and dates are on a first come basis.

Since it's an outdoor walking tour, be sure to wear comfortable walking shoes, appropriate clothing and bring a flashlight to help guide you. Don't bother wearing garlic around your neck, it doesn't work warding off ghosts.

Bucks County Gazette Friday July 11, 1913

BIG CELEBRATION AT COUNTRY CLUB

Corner Stone Laying for Handsome New Building at Langhorne.

July 4th expressed a significance to the members of the Bucks County Country Club at Langhorne beyond the fact of it being "Independence Day" It also marked a new Independence for the club symbolized in the laying of the corner stone of the new club house on their own club grounds at the brow of the hill at the north of the borough. The club house is beautifully situated, commanding a most extensive view embracing the picturesque valley of the Neshaminy and adjacent heights.

George T. Van Norman, as chairman of the Building Committee, presided for the occasion and was most happy in his introductory remarks and hoped the building of the club house not only marked prosperity for the club but usefulness and entertainment for others.

In introducing the president of the club, Charles J. Matthews, he said whatever of us has done the responsibility and credit of the new building rests upon the president who has contributed unsparingly his enthusiasm, interest and most earnest efforts towards this consummation. Mr. Matthews stated that a year ago, July 7th, they agreed to build a new club house and it was due to George T Van Norman that they had succeeded in receiving plans for such a commodious club house so well adapted to our needs at a cost of \$14,000. The golf course of 58 acres, 54 of which we own and 4 acres leased, were laid out by Mr. Finley of Philadelphia, and will make' an unusually fine course for the golf enthusiasts.

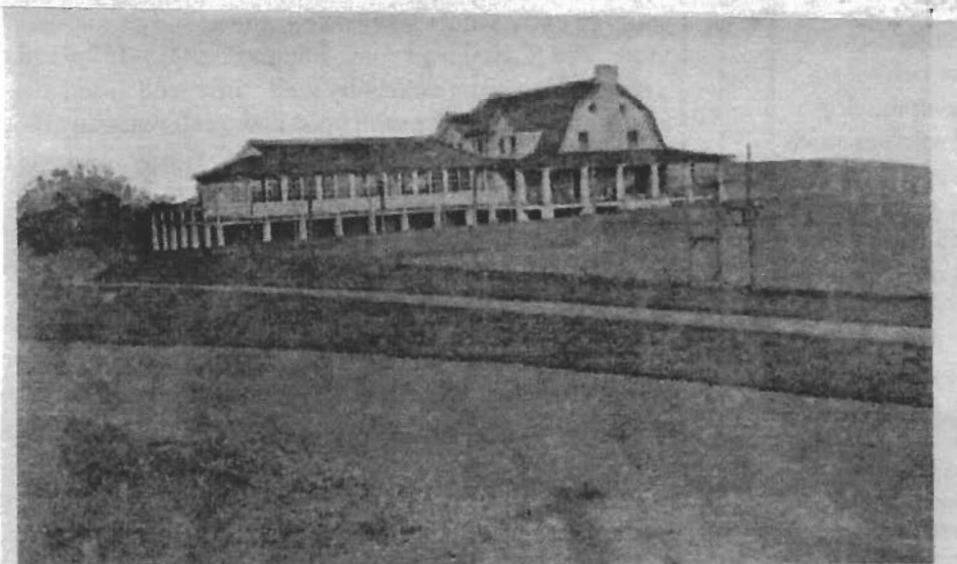
Mr. Matthews placed in the stone the current list of membership, the appeal of the Finance committee requesting contributions, programme for the month of June and the Fourth of July celebration, a brief history of the club and its by-laws and constitution. A golf ball, coins and the builder's card, Angelo di Renzo, were also enclosed. After Mr. Matthews' speech he was surprised by a chorus from the assembly, "Hello Charlie, He's a Friend of Mine," given with rare good will in appreciation of his untiring interest in the club's welfare.

The architect, Oliver Randolph Parry, gave an address and advanced the thought it was eminently fitting that a building of solid substantial lines adapted to the comforts of the club should be erected on this site, as it represented the strength of the Conservative Bucks Countians and overlooked the historical grounds in the distance, where the Continental soldiers marched.

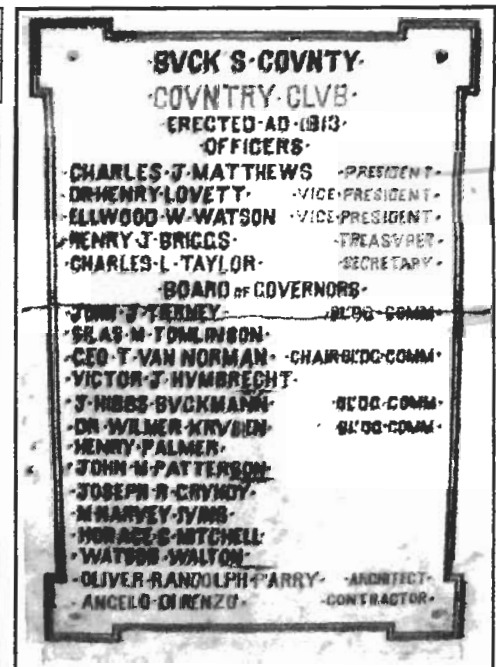
Dr. William J. Krusen spoke in a humorous vein in behalf of the House committee and said the Bucks County Country Club was not a Langhorne club, but essentially a county club, and he felt the Goddess Hygeia and Cupid held sway, and from its cosmopolitan character, the aggressive bull moose, the donkey and the elephant all met on friendly grounds, likewise all religious differences were forgotten, the Friend, Roman Catholic, Methodist, Episcopalian, Presbyterian forming friendly rivals in sport, and he hoped the club would make us all hopeful and helpful, and give health and happiness.

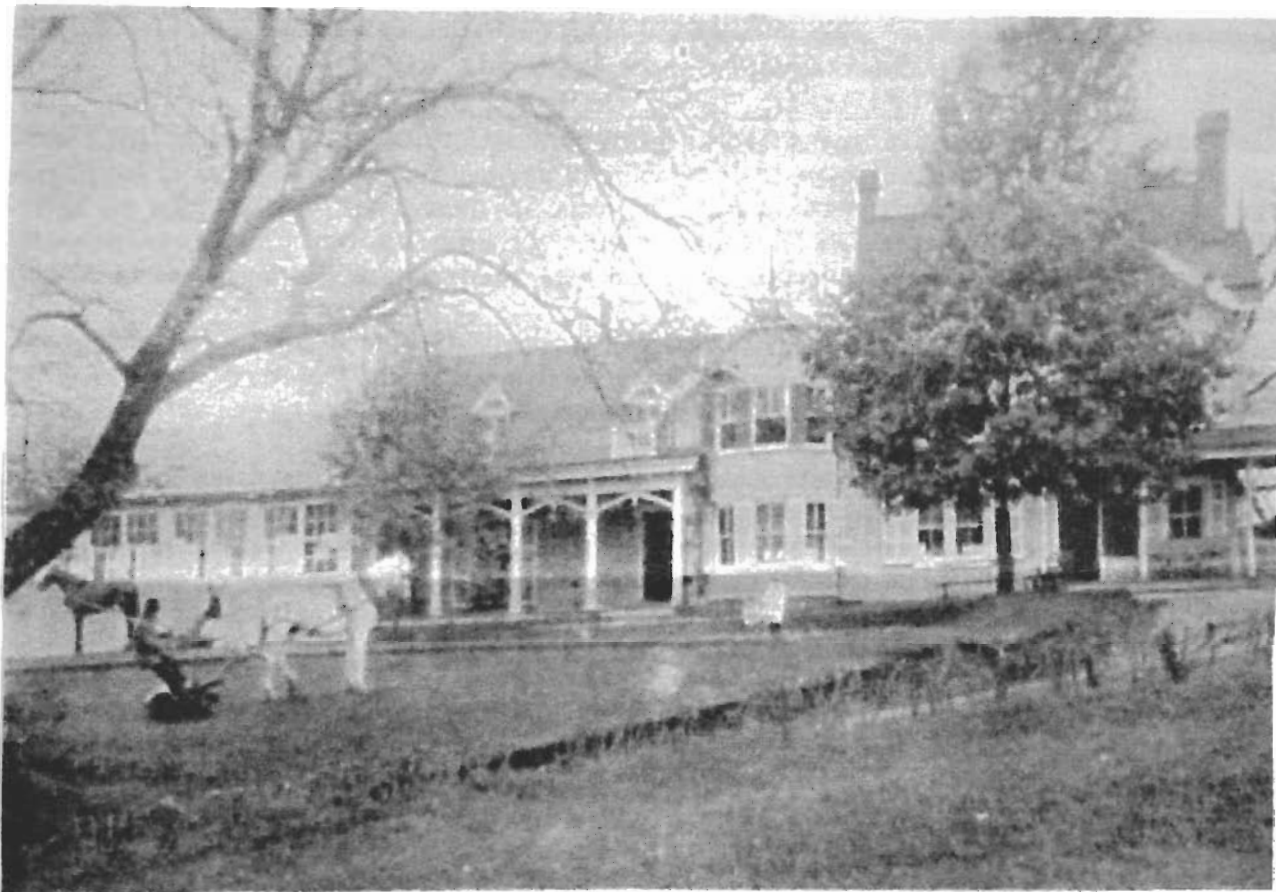
Joseph R. Grundy, of Bristol, spoke for the board of governors, which has worked whole-heartedly and manfully for the club's interests ever since it's organization, and spoke of the relationship of Bucks County Country Club to Bucks Co., it being just what the lower end of the county needed and it is eminently fitting that the social centre should be established in this community in a club that represents the conservative element that moves not hastily but to some purpose, not only does the club dispense hospitality but it is a beautiful place where youth may go to become a beneficial and healthful race.

The photo below is the Bucks County Country Club circa 1913. The marble plaque (right) is in HLA's museum today for all to view.



BUCKS COUNTY COUNTRY CLUB, Langhorne, Pa.





Did you know there was an earlier Bucks County Country Club, circa 1900? This original country club was located at the old Eastburn estate. Today the address is 413 N. Pine Street and is located just past Summit Avenue on the east bound side of Rt. 413 as you head to Newtown. The home stands today high on the hill. The photo above is of the club. A man is mowing the course with a horse drawn mower.

**The following is an excerpt of an article about a Party hosted by the original Buck County Country Club...
*'The Bucks County Gazette' Friday, November 6, 1908***

The pumpkin in all its golden glory, sheaves of rye, shocks of corn with ripened ear and bunches of corn with its rich red and yellow tints, suspended by its husk from beam and electrolier; the ruddy beet and the purple topped turnips all lent their color and character to the very attractive harvest scene set for the masqueraders at the Hallow E'en dance at the Bucks County Country Club.

Faces laughing, solemn, broad, long, grotesque and varied, from the whole pumpkin family cast their illuminating orbs upon guest and dancer; and the electric lights, subdued by a fluffy covering of red and yellow, gave a soft light. Rakes upon the wall, and striking posters in the country fair style added another touch to the rural setting.

Price's Orchestra of five pieces hidden beyond the field of rye gave an irresistible invitation to dance, responded to most heartily after the grand march by the masqueraders, by those not in costume also. The characters were very varied and entertaining, many being specially worthy of note.

About 10 o'clock sweet cider, molasses candy, scotch-cakes, apples, pretzels, etc., were served in the café to all, wooden plates with the witch's face being used to serve upon and afterwards taken as souvenirs.

Maidens seeking to know their fate in the matrimonial line found by melting half a lead spoon over the open grate and immersing it into cold water, the shape produced would-be token the occupation of their future helpmate; several finding florists, jockeys, fisherman, pottery-men, etc., responding to the test and witchery of Hallow E'en.

A very delightful club dinner in charge of the chairman of the House committee, Howard Reifsnnyder, preceded the dance and congratulations were extended to Miss Alice Matthews for the success of the evening, she having the affair in charge.

Famous Langhornians(?) (People from Langhorne)... Did you know that Samuel Eastburn & Clarence Buckman, both from Langhorne, were part of the original organization that established Washington Crossing Park?

Bucks County Gazette January 31, 1913

PARK TO MARK HISTORIC SPOT

Washington Crossing, park in Bucks County gains Enthusiastic Support Organization Formed

Decided impetus was given to the movement on Saturday for a park at Washington's Crossing, Taylorsville, Bucks county, when about fifty prominent people met there and after looking into the situation organized what will be known as the 'Washington's Crossing Memorial Association of Pennsylvania'. Immediate steps will be taken to see that a park or other suitable memorial will be established or erected to commemorate the crossing by Washington and his continental troops previous to the battle of Trenton.

The New Jersey Commissioners who are looking after the placing of a similar memorial on the New Jersey side of the crossing, met the Pennsylvanians and after William L. Doyle, vice president of the New Jersey commission, explained what New Jersey was doing in the matter, Charles W. Leavitt, engineer for the New Jersey commission, told those present of the possibilities that the situation offered in Pennsylvania.

Senator Buckman, also in attendance, told of his interest in the project and stated that he has sent to the Legislative Bureau a bill which if adopted will bring about the desired results. His pledge to the support of the project was heartily applauded. Assemblymen Savacool and Foster of Bucks county also pledged their support to the measure.

After the sites on both sides of the river had been inspected the assemblage adjourned to the Grove house, where J. Edward Moon, of Morrisville, at whose instigation the meeting was called, delivered the opening address, outlining the plans regarding the erection of a memorial on the Pennsylvania side.

RESOLUTION ADOPTED

Resolved, That in as much as it is our desire that there shall be established at Taylorsville, Bucks County, Pa., a park or other suitable memorial that shall commemorate the crossing at that place by Washington and the Continental Army and the meeting to further this desire proposes that we shall organize an association to be known as the Washington's Crossing Memorial Association of Bucks County.

CONGRESSMAN WILL HELP

The newly elected president then called upon the Hon. B. E. Difenderfer, Representative in Congress. Mr. Difenderfer asserted that if the men and women in the movement will display the same energy that is being shown by those seeking political office they will undoubtedly be successful. He attended the meeting, he said, to ascertain the feasibility of the movement, and gave assurance that in so far as his power lies he will do everything possible to have the two parks linked with such a bridge as has been pictured and projected.

It is time, he said, that Americans, that go abroad and stand with awe before the shrines of Napoleon and other great men of Europe, take steps to preserve many of the equally great places of historic interest in their own country. suitable memorial of the Battle of Trenton; this memorial to commemorate the spot.

Hon. Clarence Buckman and Samuel C. Eastburn were invited guests from Langhorne to meet the parties interested in securing the location for a State and National park at Washington's Crossing, near Taylorsville at a meeting held there on Saturday. Mr. Eastburn was also a member of the committee appointed by the Bucks County Historical Society to represent it on that occasion and also to represent the Progressive League of Langhorne

DAILY EXCURSIONS TO C A P E M A Y .



THE MAMMOTH THREE DECK STEAMER REPUBLIC WILL LEAVE RACE STREET WARF, PHILADELPHIA, commencing about the 20th of June, on her daily trips. This bountiful Iron steamer has been built strong for ocean service, supplied with state rooms and all the necessary appointments. Her 3 spacious deck saloons, handsomely furnished with ample facilities for 3,000 passengers, with her immense size and architecture, makes her the finest and largest boating palace on our waters. Fare for the round trip not to exceed One Dollar. She will leave in the morning, returning in the evening. For information, apply to CAPT. J. CONE, Steamer Columbia, Chestnut Street Wharf, Philadelphia

An Electoral Update...

Barbara Niedrist and her committee members are working on nominations for 4 board members and 3 nominating committee members for 2004-2005. These nominations will be presented for election at our October 25 meeting.

The Steamer ad is from the *Bucks County Gazette*, August 1, 1878

NEWPORTVILLE FLOUR MILLS.

NEWPORTVILLE, PA.

FLOUR FRESH GROUND FROM
THE BEST WHEAT,
Promptly delivered to customers.



SEEDS:

Such as TIMOTHY and CLOVER

Cash paid for all kinds of Grain, at market prices,
Such as Wheat, Corn, Rye, Oats, etc.

I.C. FETTER
Newportville, Pa.

Remember the George Reed from the 'Big Butter Record', here is an excerpt of his obituary from the Langhorne Leader, March 16, 1922

George M. Reed Veteran Dies

Langhorne lost one of its most highly respected citizens and a few remaining Civil War veterans in the death about 9 o'clock yesterday morning of George Moser Reed, which occurred at his home at Bellevue and Watson Avenues, following a lengthy illness.

Deceased was born November 23, 1839 in Ireland and was brought to this county at age 5 by his parents. He attended school in Philadelphia and Bensalem, and later assisted his father on the farm. In 1866 he began farming on his own account in Hartford County Maryland, where he remained for 8 years. Her left there to purchase and take possession of a farm in Middletown Township, Bucks County. **Here he** devoted his attention largely to dairying, and established a fine trade in Bristol. He married Mary Jane Sharkey on April 2, 1863. They had 10 children together.

On August 8, 1862, Mr. Reed enlisted for service in the Civil War in the Union army. He was mustered in for 3 years in Philadelphia, as a member of Company K, 13th Regiment, Pennsylvania Calvary, which he served throughout periods of hostilities. Mr. Reed was an active campaign, for he took part in many skirmishes and in a number of important engagements, including the battles of Winchester, Strasburg, and two engagements at Martinsburg, South Mountain, and the 7 days battle of the Wilderness. He was twice wounded, once at Winchester and again at Culpeper Courthouse. Mr. Reed was in the Washington D.C. hospital for over 3 months. He was honorably discharged at the end of the war on July 14, 1865 in Raleigh, N.C.

Coming Attractions for 2004 Brought to you by HLA

Wednesday, September 8, 7:30pm VOP for VIP'S

We will be hosting a Volunteer Orientation Program where we will welcome you, introduce ourselves, and present and explain the many opportunities available at HLA that may interest you.

Refreshments too !

Saturday, September 18,

Apple Festival and Baking Contest

Join us for a fun filled apple day at our 1st Apple Festival. Along with many seasonal activities for the young and old, we are having an old fashioned apple baking contest.

Saturday, September 25

175th Anniversary Celebration of the Langhorne Fire Company

- Fireman Parade through town
- Revolutionary War reenactment at Heritage Farm
- HLA will be open during the day to help celebrate

Ghost Tour'04

Tour dates: October 2, 3, 20, 23, 27 & 30

Mark your calendar for the 2nd Annual Ghost Tour. Don't miss this spooky event as HLA hosts a guided tour through the old streets of Langhorne Borough to learn about our spirited friends.

Reservations and tickets are required.

Monday, October 25, 8pm

General Meeting featuring John Roushey who will portray the famous Philadelphia clothier, John Wanamaker. FYI- Anna Mary Williamson's Uncle Isaiah Williamson was a business associate of Mr. Wanamaker.

Thursday, Nov 18

Holiday House Tour 11am-8pm,

Ring in the holiday season with the 'Holiday House Tour & Tea' sponsored by the Four Lanes End Garden Club. The old library will be part of the tour with a FABULOUS presentation produced by our chairperson, Joy Ward. Be there!

Sunday, December 12

1-3pm Santa visits the old library

7-9pm Carol sing & tree lighting ceremony

Happy Holidays & See you next year...

Many Thanks from HLA to...

- The DeFrehn Corporation for finishing the repairs to our slate roof, all at the low cost of \$1.00.
- K.E. Seifert, Inc. for installing outdoor spigots around our historic building with no charge to our organization!

We thank these businesses for helping us in our mission to preserve and remember the past in all its forms, while educating our community about their past. Maintaining our historic headquarters the Anna Mary Williamson Library & Museum is our utmost priority in order to achieve our mission.

A community update...

Don't forget to mark Saturday, September 25 on your calendar since Langhorne will have various events going on. Besides the Fireman Parade, there will be a Revolutionary War encampment at Heritage Farm, 222 N. Green St., sponsored by the Revolutionary War Site Commemoration Committee. It's a great opportunity to learn about colonial army life. You can meet the soldiers and tour their tents. Parking is available at the farm.

The information about both of the Bucks County Country Clubs was researched by Charles Lauble. I'm sure you know the 2nd BCCC still stands at North Bellevue Avenue and is now called The Middletown Country Club. Unfortunately due to the winds of time, the club house today does not look as it did in 1913.

During his research Charlie came across some interesting information about the 'old days'. Many things written are a mystery and the information compels one to try and solve the many mysteries. For example, reading through some social events listed in old newspapers, Charlie came across various party themes/entertainment that are no longer in existence today, at least that we know of. I'm sure the Bucks County Country Club was a host to many of these parties. Here are a sample of a few of them. Have you heard of any of these?

Rebekah's Day	Thimble Party	Witches Dance
Rag Sewing Party	Peggy Party	Bean Social
Military Euchre	Trolley Party	Maying
Progressive Euchre	Clipping Party	Phantom Dan
Tilting Contest	Bean Auction	Chatauqua
Silk Sock Social	Tally Ho Party	Public Smoker
Novelty Party	Rag Sewing Party	Box Social
Cob Web Social	Package Party	Apple Bee
Jug Breaking Contest		

New to our collection...

Stop by to view the most recent addition to our museum's collection. Mr. William Parry donated 25 ornate, antique hair combs in the memory of his wife, Evelyn Parry. They are quite lovely and unique!



Historic Langhorne Association's Officers and Committee Members

President- Jean Noble
Vice President- Jack Fulton
Treasurer- Joan Bodnar
Recording Secretary- Evelyn Aicher
Corresponding Secretary- S. Marrington
Technology- C. Lauble & Larry Langhans
Artifacts- Evelyn Aicher
Publicity- Sally Valone
Hostess- Nancy Pietsch
Archives- Larry Langhans & Jim Maier
HLA Gift Shop- E. Aicher & Judy Sloan
Finance- Jack Fulton
Genealogy- Ann McDonald
Holiday House- Joy Ward
Library- Jean Noble
Membership- Jack Fulton
Newsletter- Sally Marrington
Oral History- Open
Programs- Joy Ward
Property- Charles Lauble
Sun Shine- Nancy Pietsch
Ways and Means- Elsie Knight
Picture your name here & volunteer



HISTORIC LANGHORNE ASSOCIATION

160 West Maple Avenue

Langhorne, Pennsylvania 19047

(215) 757-1888

Membership Renewal Request

August, 2004

Dear Member,

On behalf of the officers and directors of the **Historic Langhorne Association**, I thank you for your support of this important local organization and ask that you continue that support by renewing your membership for the 2004/2005 membership year.

As you've seen in our revamped newsletter, the organization has been very active over the past year with interesting speakers and trips, an antique appraisal, a formal Tea and our first attempt at a Halloween ghost tour of Langhorne. The schedule for this coming year is filling up quickly and includes a September Apple Festival and plans for an expanded Ghost Tour in October. Larry Langhans, Charlie Lauble, Jim Maier and others are making substantial progress in cataloguing the Association's collection of documents and photographs and converting it to digital form for easier research. Our building (and gift shop) is open on Wednesday mornings and evenings and on Saturday from 10:00 a.m. to 2:00 p.m. Please stop in to see everything that's happening or join us for one of our periodic membership meetings to be announced in our newsletters.

Our activities are increasing but so is the cost of maintaining the library building. Our current annual budget for building maintenance (including utilities, insurance, repairs, security, etc.) is over \$12,000. Our current membership income and investment earnings cover about 60% of this cost. The balance must be earned through other fund-raising activities which requires a significant commitment of time from the membership.

Enclosed is a membership form for the membership year beginning September 1, 2004, to August 31, 2005. Please return this with your membership contribution in the enclosed envelope as soon possible. Please consider a contribution at the Patron or Century Group level to help this organization continue its work in preserving local history. If you have an e-mail address, please indicate it on the form and **please mention our Organization to your neighbors.**

Volunteers are always needed to staff the building during its open hours and to assist in the ongoing Archives project and in fundraising activities. If you have an interest or if you know someone who may be interested please let us know by contacting us at our website, by phone or by indicating your interest on the membership application.

Sincerely,

Jack Fulton, Membership Chairman

Visit us at our Website: hla.buxcom.net/

Historic Langhorne Association Membership Information

All memberships include:

- Membership Card Newsletter Invitations to General Meetings
- Notice of all special events and programs
- 10% discount on ALL Historic Langhorne Association merchandise
(Merchandise available at Association headquarters and Judy's Corner)

Member Meetings are held at 8:00 PM (Dates and programs to be announced)

Membership options:

Individual	\$ 20.00	Single person membership
Family	\$ 25.00	Household membership
Patron	\$ 50.00	Household membership

The following members will receive a copy of the Langhorne Centennial Book or a CD from our collection. Please bring your member card to the Association headquarters to select your gift.

Century Group	\$ 100.00
Thelma Worthington Associate	\$ 500.00
Williamson Lifetime member	\$ 1,000.00

Historic Langhorne Assoc. is a 501 (c) (3) organization. Contributions are tax-deductible to the extent permitted by law.

 Kindly separate and return
Membership year September 1, 2004 to August 31, 2005

Name _____
 Address _____
 Apt. _____
 Phone: _____
 email: _____

	check appropriate box		
Individual	\$ 20.00 _____	Family	25.00 _____
Patron	50.00 _____	Century Group	100.00 _____
Worthington Assoc	500.00 _____	Lifetime	1,000.00 _____

If your employer offers a matching gift program, please enclose appropriate forms.

Make checks payable to: **Historic Langhorne Association**
 Mail to: **160 W. Maple Ave., Langhorne, PA 19047**

Volunteer opportunities

- _____ I am willing to volunteer at HLA for 2 hours/month to help make the Association's library, archives and artifacts more available to the community (always with a partner; on-the-job training provided.)
- _____ I am willing to serve on the Board or other committees as openings arise or to assist in organizing fund-raising activities.